



**Akron Public  
Schools®**

# Reopening Plan

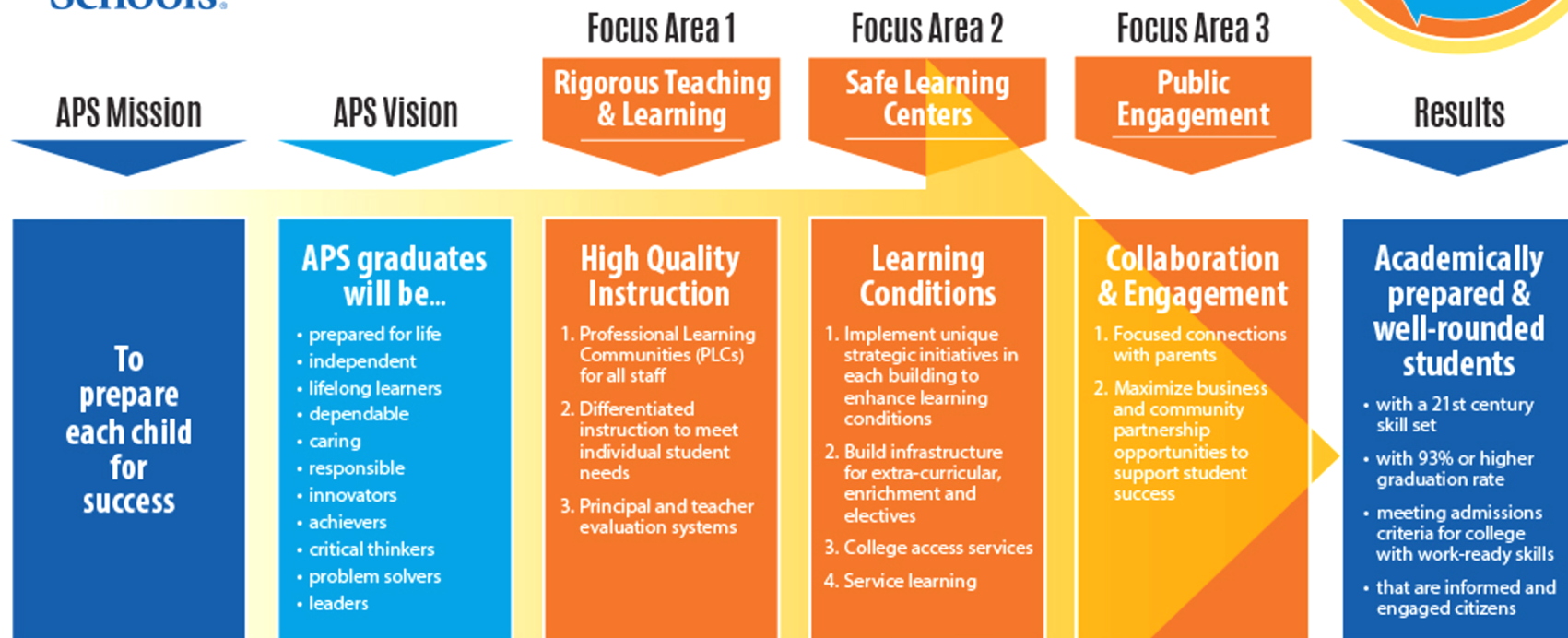
Presentation to the Akron Board of Education

June 29, 2020



# District Focus:

to be the #1 urban school system  
in the United States



Organizational Culture: a collaborative learning culture between and among all stakeholders

Foundations: Skilled Employees, Financial Stability and Advanced Technology



# Seven Year Technology Investment

**Beginning 2012**

## Digital Learning Infrastructure

Redesign of tech network infrastructure  
Device replacement plan  
Continual bandwidth expansion  
Digital Curriculum Adoptions (Math, English, Science & Social Studies)

**2016**

## 1:World

Computers for all staff  
Computers for all students  
Google Apps for Education

**2020**

## APS Connected Learning

Student online learning  
Staff online support  
Family online support  
Help desk  
Technology assistance and repair  
100 % Connectivity Team

**2014**

## Technology Support Specialist

Technology staff hired for device repair and technology training – assigned to each school

**2017**

## APS Online

Option for all students at all buildings  
Unique in APS – students have face-to-face time with mentor

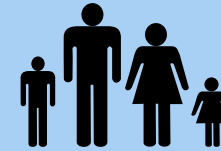
# After APS Connected Learning 1.0

## Lessons Learned



### Importance of:

- Seven Year Tech Investment
  - Professional Development
  - High-quality Educators
  - Union/Mgmt Collaboration
- 
- Students Involved in Activities Pre-COVID Spent More Time on Remote Learning Lessons



### Parent Survey Results

**Excellent or good satisfaction with APS Connected Learning**

74%

**Have internet at home (1% no internet)**

96%

**Amount of work was appropriate**

83%

**Biggest COVID concern is educating student at home**

43%

**Second biggest concern of parents is unemployment**

24%



Planning Team Convened



# Our Timeline

## Reopen and Recover

May 1 –  
May 12

Pat Shipe, AEA President & Ellen McWilliams-Woods, CAO, selected by Superintendent to Co-chair; **recruited** teachers, principals, parents & community members to serve

May 12

**Introduced** Plans for RRAP Team to Board of Education Instructional Policy Committee

May 14

**Launched** 140+ Member RRAP Team

May 21 –  
June 11

Subsequent **Meetings** of RRAP Team and 8 Action Teams; many Action Teams scheduled additional meetings between the 5 RRAP large group meetings

June 12

**Presented** Draft RRAP Recommendations to Superintendent

June 16

**Updated** Board of Education Instructional Policy Committee

June 29

RRAP Co-chairs **Present Recommendations** to Board of Education

# Eight Committee Teams

## Reopen and Recovery Action Plan



### Action Teams

#### AEA Members Co-leading

1. Health Advisory
2. School Model and Instructional Recovery
3. Extracurricular and Off-Campus Trips
4. Athletics

5. Mental Health and Transitions
6. Logistics and Technology
7. Family Engagement
8. State and Federal Funds

### Action Team Work

- Reviewed CDC, ODE, Public Health Department, other state's guidelines
- Studied how other countries reopened
- Reviewed survey data and focus groups from families, students and staff

# APS and Akron Education Association RRAP Action Team Leads



Action Plan	Team Leads
Health Advisory	Debra Foulk, Executive Director of Business Affairs; Sara Leffler, High School Teacher
School Model and Instructional Recovery	Ellen McWilliams-Woods, CAO & Assistant Superintendent; Pat Shipe, AEA President; Karen Gegick, Executive Director of Teaching & Learning; Dawn Blakeney, Elementary Teacher; Chris Milcetic, High School Teacher
Extracurricular and Off-Campus Trips	Megan Mannion, Learning Specialist, Teaching & Learning; Tina Daniels, Middle School Teacher
Athletics	Mark Black, Executive Director of Secondary Schools; Joe Vassalotti, Athletic Director; Marques Hayes, Middle School Teacher
Mental Health and Transitions	Tammy Brady, Director of Special Education; Brian Hill, Psychologist, Child Study; Sheneeka Rodgers, Middle School Counselor
Logistics and Technology	Howard Lawson, Executive Director of Data & Accountability; Debra Foulk, Executive Director of Business Affairs; Bruce Brown, High School Teacher; George Niinisto, Middle School Teacher
Family Engagement	Carla Chapman, Director of Community Relations; Carla Bishop-White, Elementary Counselor; Janell Brown, Elementary Teacher
State and Federal Funds	Ryan Pendleton, CFO & Treasurer; Michael Householder, AEA Vice President



# APS Principles Serving as Guideposts for Reopening Design

## College & Career Academy PK-12 Transformation



## Safety

Physical and Social-Emotional  
Well-Being of Students and Staff



## Equity

in Addressing Student Needs



## Educator Autonomy Differentiate Based on Unique Needs of Each Student



## Seamless Transitions Designed Between Remote, Blended and Site-Based as COVID Needs Arise



## Fiscal Responsibility



# Reopening and Recovery Rooted in our Mission



**High Quality Instruction**

**Focus Area 1**

**Rigorous Teaching  
& Learning**

**Learning Conditions**

**Focus Area 2**

**Safe Learning  
Centers**

**Collaboration & Engagement**

**Focus Area 3**

**Public  
Engagement**

**Academically Prepared and Well-rounded Students**

## Five Major Findings

# Parent Survey & Focus Group Results

79%

Send student(s) **back to school**

12%

**Not sure** at this time

9%

Prefer **remote learning** for student(s)

31%

**Interested** in online training

30%

**Not** interested in online training

35%

**May be** interested in online training

## Need for Child Care

43%

Concerns: availability, safety, cost, transportation



38%

Need for Mental Health Supports

30%

Need Food Resources



# Major Findings Teacher Survey



## Two Biggest Challenges Working at Home

70% Connecting with Students  
26% Parent Communication  
24% Grading Concerns  
17% Distractions  
13% Technical Issues/Connectivity  
11% Keeping a Regular Schedule  
Teachers commented on the difficulty some students had using email.



## Top 3 Tools Used for Connected Learning

Google Classroom  
Google Meet  
District-adopted/Online Curriculum



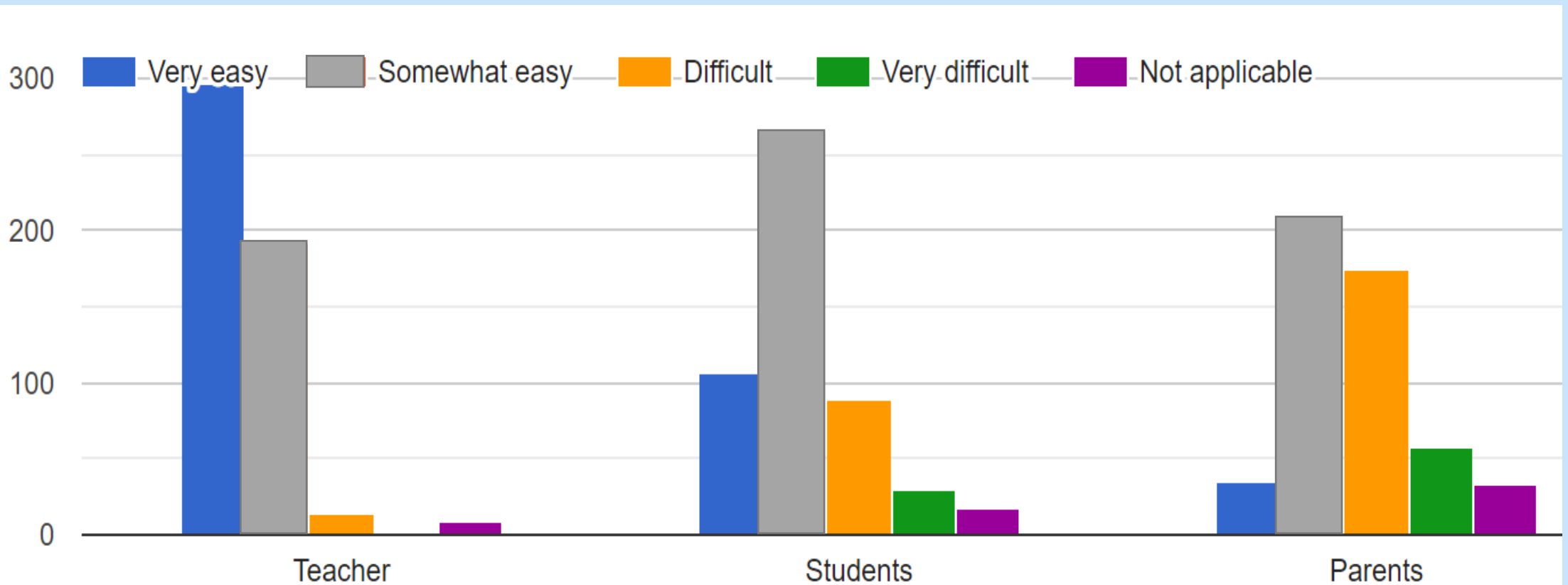
## Useful Supports

89% Communicating with Colleagues  
44% Online Resources, Toolkits  
39% Building Leadership  
19% District Supports

# Major Findings (continued from previous slide)

## Teacher Survey

How easy is Google Classroom to navigate for you, your students and families?



# Big Takeaways

## Teacher and Principal Survey

### Regarding School Models for 2020-21

Emphasizing **safety** as a top priority for all staff and students (i.e. masks, social distancing, routine cleaning, small class sizes)

Prioritizing **face-to-face** maximum instructional time for our youngest learners and our most academically challenged students

Utilizing a **hybrid model** of face-to-face and online instruction for older students and academically successful students





Recommendations from Eight Action Teams

Key Partners

## Health Advisory

**WORKING TODAY  
FOR A HEALTHIER  
TOMORROW**



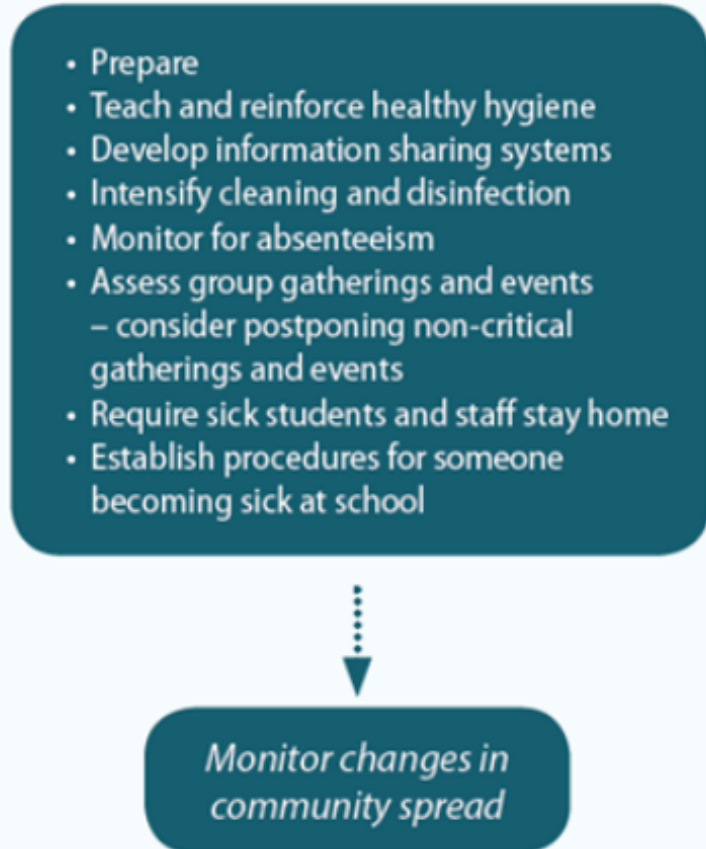
Akron  
Children's  
Hospital



## All Schools Regardless of Community Spread



## No Community Spread



## Minimal to Moderate OR Substantial Community Spread



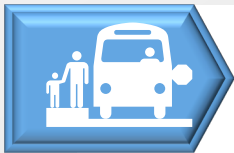
# Principles Used for Planning and Recommendations

## Health Advisory – Based on CDC, Draft ODE/ODPH

Will Confirm When Governor & ODE Release Restart Guidance



Six feet of social distance at all times (results in 12 or less students per class)



50% capacity on each school bus (results in no more than 25 students per bus)



Personal Protective Equipment (PPE) for students/staff



Health assessments (taking of temperatures) of students/staff and plans for either if they are symptomatic

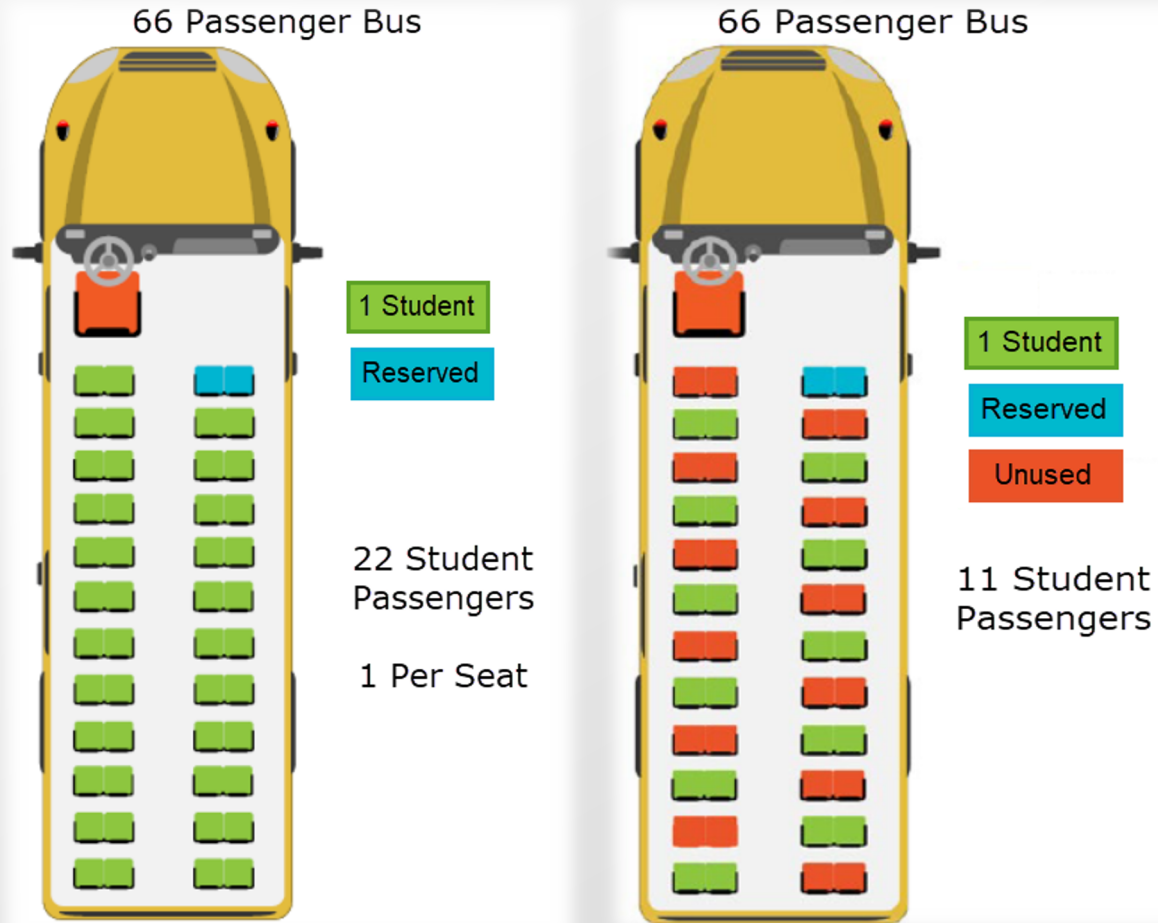



Increased sanitation requirements throughout the school when in session for persons and facilities (bathrooms, water fountains, high touch areas to be cleaned every 2 hours)



Large group gatherings - current limits are not more than 10 in a confined space/50 with an areas with proper social distancing

# School and Metro Buses Space Considerations






**APS**  
**CONNECT**

### APS: METRO Rules to Remember

For the many students who ride METRO:

Buses are running at a 50% capacity and cannot be at more than 50% capacity at any point.

Face coverings are mandatory for METRO employees and passengers. This applies to children ages two and up. Per the CDC, children under two years old should not wear face coverings.



**ezfare**  
A Safe Way to Pay

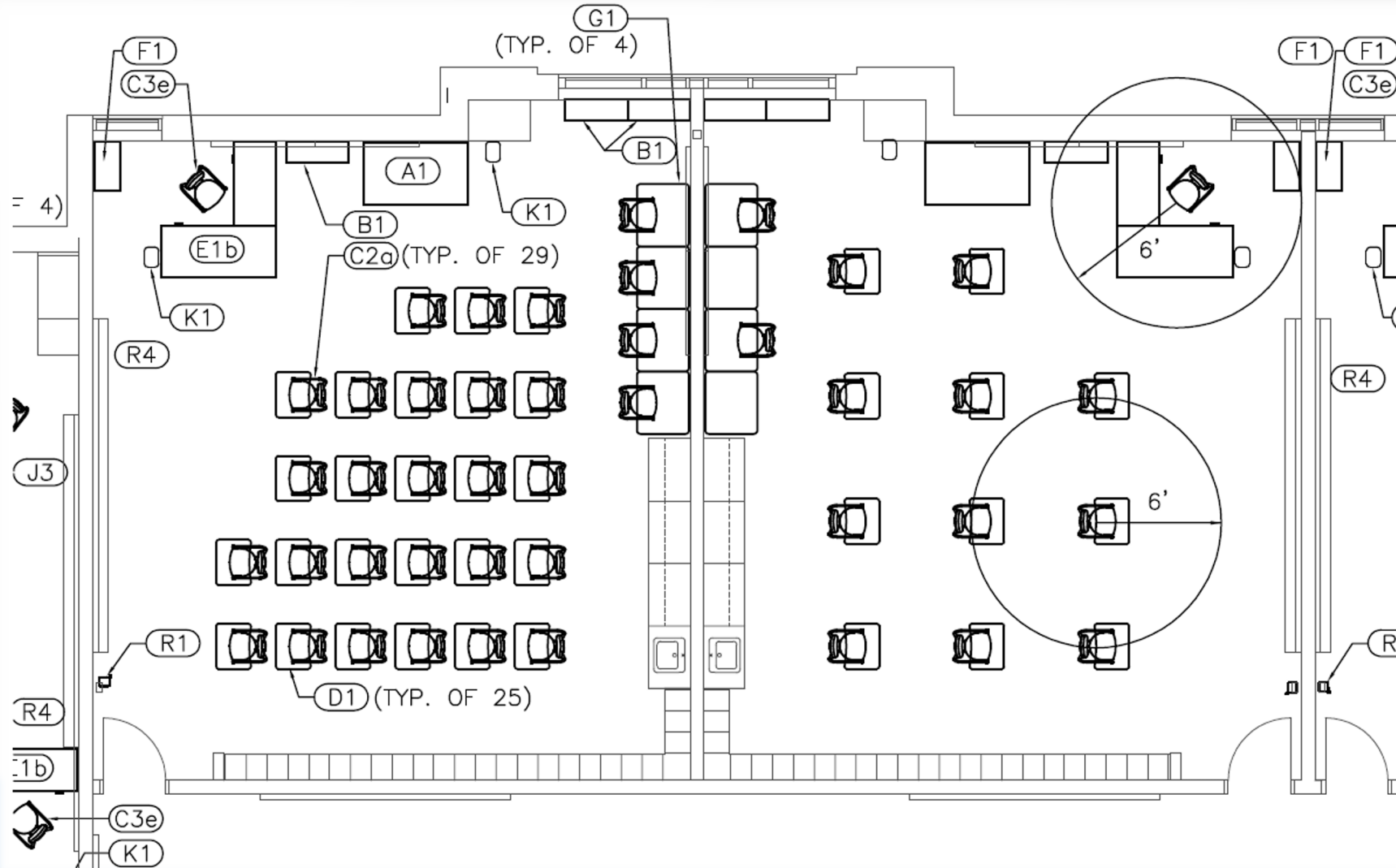
> DOWNLOAD  
> PURCHASE > BOARD

Google Play App Store



# Classroom Layout

## Space Considerations



From 25  
students to 11  
or 12 students,  
if station  
removed from  
back of room

# APS Preparation High-Risk COVID Spread

Health Advisory Action Team recommends personal protective face coverings for all students and staff unless there is a medical exception

- ✱ Identifying different options of face coverings that meet CDC standards (e.g., cloth, plastic shields)
- ✱ Identifying costs per student for different types of face coverings
- ✱ Once the governor releases the K-12 Restart Guidelines, APS will finalize plans

Source: Summit County Public Health

## WHY WE WEAR MASKS

HIGHEST RISK



MORE PROTECTIVE



EVEN MORE PROTECTIVE



LOWER RISK



# Recommendations Instructional Recovery



Provide expanded summer programming to recover content & expanded programming for students with intensive needs in 2020-21

Provide tech training and videos for APS Connected Learning 2.0 and blended learning

Create portal for promising practices from APS Connected Learning 1.0

Once governor/ODE releases Restart Plan, provide guidelines for fine arts, Essential Experiences, Experiential Learning Days and world languages

Identify Assessments to Identify Strengths and Gaps Regardless of School Model Families Choose





# Summer Offerings Instructional Recovery



## Elementary APS Connected

 <b>APS CONNECTED LEARNING</b> <b>Early Launch Program</b>	 <b>APS CONNECTED LEARNING</b> <b>Be Ready!</b>	 <b>APS CONNECTED LEARNING</b> <b>Kindergarten SPARK</b>	 <b>APS CONNECTED LEARNING</b> <b>Bridge to Kindergarten</b>
<u><a href="#">Register Here</a></u> <small>Incoming Grades 1-4 July 20-August 14</small>	<u><a href="#">Participate Here</a></u> <small>Incoming Grades 1-5 June 15 - August 14</small>	<u><a href="#">Participate Here</a></u> <small>Incoming Kindergarten Dates July 20-August 28</small>	<u><a href="#">Register Here</a></u> <small>Incoming Kindergarten July 27-August 17 Buchtel and East Cluster</small>
 <b>APS CONNECTED LEARNING</b> <b>Akron After School</b>	 <b>APS CONNECTED LEARNING</b> <b>Reading Challenges</b>	 <b>APS CONNECTED LEARNING</b> <b>Maker Math</b>	 <b>STAY IN THE GAME!</b>
<u><a href="#">Join Here</a></u> <small>Incoming Grades 1-5 June 15-August 21</small>	<u><a href="#">Challenge &amp; Bookshelf</a></u> <small>Incoming Grades 1-5 June 15-August 21</small>	<u><a href="#">Take a Challenge!</a></u> <small>Incoming Grades 1-5 June 15-August 21</small>	<b>Summer Contest</b> <small>Coming Soon! Attendance = Success</small>

## Secondary APS Connected

 <b>STEP Program</b>	 <b>APS CONNECTED LEARNING</b> <b>Be Ready!</b>	 <b>APS CONNECTED LEARNING</b> <b>Akron After School</b>	 <b>APS CONNECTED LEARNING</b> <b>Maker Math</b>
<u><a href="#">Participate Here</a></u> <small>Incoming 7th (4th Miller South 5th NW47) June 15 - August 14</small>	<u><a href="#">Participate Here</a></u> <small>Incoming 8 (7th Grade Seat) June 15 - August 14</small>	<u><a href="#">Join Here</a></u> <small>Incoming 8 (7th Grade Seat) June 15-August 21</small>	<u><a href="#">Take a Challenge!</a></u> <small>Incoming Grades 8-12 July 15-August 21</small>
 <b>PLATO COURSEWARE</b>	 <b>APS CONNECTED LEARNING</b> <b>Reading Challenges</b>	 <b>APS CONNECTED LEARNING</b> <b>Reading Challenges</b>	 <b>APS CONNECTED LEARNING</b> <b>Summer APS-Online</b>
<u><a href="#">HS Credit Recovery</a></u> <small>Class of 2020 and 2021 June 9-July 2</small>	<u><a href="#">Middle School Bookshelf</a></u> <small>Incoming Grades 6-8 June 15-August 21</small>	<u><a href="#">High School Bookshelf</a></u> <small>Incoming grades 9-12 June 15-August 21</small>	<u><a href="#">APS-Online</a></u> <small>Health and PE Summer School June 9-July 9</small>
 <b>APS CONNECTED LEARNING</b> <b>KSU Virtual Health</b>	 <b>APS CONNECTED LEARNING</b> <b>Cosmetology Camp</b>	 <b>APS CONNECTED LEARNING</b> <b>Office of Special Ed</b>	 <b>STAY IN THE GAME!</b>
<u><a href="#">Register Here</a></u> <small>Incoming grades 10-12 August 2-August 20</small>	<u><a href="#">Information Here</a></u> <small>CCAA Pathway Students July 9-July 21</small>	<u><a href="#">Information Here</a></u> <small>Pre1012</small>	<b>Summer Contest</b> <small>Coming Soon! Attendance = Success</small>

# Action Team Recommendations

## Instructional Recovery

Start with Existing  
Assessments



### Elementary

i-Ready  
ORR  
Writing samples



### Middle School

Exact Path  
Writing samples



### High School

Teacher-generated readiness tools for mathematics Teacher-generated readiness tools for ELA  
Writing samples and content pre-assessments



Recommendations for School Models to Reopen



# Three Flexible Options for the Reopening of Schools

## School Models



### 100% Remote Learning

- Enhanced from APS Connected Learning 1.0
- Five days a week remote

### Blended Learning (Remote and Site-based)

- Five days a week: 2 site-based, 3 remote
- Approximately 12 students per class

### 100% Site-based Learning

- Five days a week
- Traditional class sizes or approximately 12 students

# Recommendations

## School Models - Considerations

**Family Choice:** Every family will have a choice between two high-quality school models for their PK-12 student:

1. **100% Remote Learning** (APS Connected Learning 2.0) or
2. **100% Site-based or Blended Learning** model listed for their grade level on the next 4 slides

**Based on Student Needs:** Students with severe disabilities will be 100% site-based with their intervention specialist; all other students on an IEP will follow the models offered and will work closely with their IEP teams to provide appropriate services

**Start & End Times:** School start and end times will be announced by the end of July after review of restart guidelines, and logistics are established for transportation and meal service



# Site-based Learning Pre-school Model

Pre-school Model	
Schedule	Classroom
<ul style="list-style-type: none"><li>• <b>Five</b> days per week, half day sessions</li><li>• Site-based learning</li></ul>	<ul style="list-style-type: none"><li>• <b>Nine</b> students per classroom</li></ul>

## Details

- Morning and afternoon sessions with expanded time for cleaning between sessions



Note: All families will have an option to continue 100% online through APS Connected Learning 2.0

# Site-based Learning Elementary Model

K-2 100% Site-based

## Student Schedule

- **Five** days per week
- Site-based learning

## Classroom

- 24 or less students per teacher; split between **two** rooms

## Details

- **½ day**: reading and math with core teacher
- **½ day**: art, music, PE, LRC, intervention or enrichment brought within classroom



Note: All families will have an option to continue 100% online through APS Connected Learning 2.0

# Site-based Learning Elementary Model

## 3-5 Blended Learning

### Student Schedule

- **Two** days per week, site-based learning
- **Three** days per week, remote learning

### Classroom

- 24 or less students per teacher; ½ attend **two** days, other ½ attend opposite days

### Details

- Remote learning will include extended lessons, virtual activities, and remote essential experiences with community partners



Note: All families will have an option to continue 100% online through APS Connected Learning 2.0



# Blended Learning Middle School Model

## Middle School Blended Learning

### Student Schedule

- **Two** days per week site-based learning
- **Three** days per week remote learning

### Classroom

- 24 to 30 students per teacher
- ½ attend **two** days, other ½ attend opposite days

### Details

- Blended learning will include extended lessons, virtual activities, and remote experiences with community partners, social emotional support/mentoring/ intervention/enrichment



Note: All families will have an option to continue 100% online through APS Connected Learning 2.0



# Blended Learning High School Model

## Project-Based Blended Learning by Academy

### Schedule

- APS Connected Learning 2.0 with students on site for collaborative projects
- Full week blended instruction

### Classroom

- School serves as activity central with flexible, blended academics
- Less than 12 to 15 students per group

### Details

- Teachers work in site-based classrooms for APS Connected Learning 2.0 and bring in students to work on projects, Career Tech labs, college and career experiences, extracurricular, capstone projects, social-emotional support and academic support or enrichment
- Academy teams establish schedules



Note: All families will have an option to continue 100% online through APS Connected Learning 2.0

## Estimates of Additional Costs

# Fiscal Outlook – State and Federal Funds

Business Affairs	\$ 4,126,138
Custodial/Maintenance	\$ 1,264,192
Student Services	\$ 1,747,053
Technology	\$ 660,000
Transportation	\$ 1,142,599
Total	\$ 8,939,982

These estimates assume all 21,000 students are in-person for learning.

# Recommendations

## State and Federal

### Purpose

- To review spending related to CARES Act and take as much stress off of general fund as possible

### Goal

- To protect programming and staff

### Work

- Worked with ODE to apply as much flexibility as possible to our federal grant spending and CARES Act
- Continue to meet to review the updated forecast in regard to spending from March 13 through the end of the year
- Once the reopening school models are Board approved, the financial impact will be determined

# Recommendations Athletics



Follow Ohio High School Athletic Association participation safety guidelines

Finalize procedures for practices & games

Communicate revised fall athletic eligibility guidelines based on Ohio High School Athletic Association

Communicate revised NCAA eligibility guidelines to athletes and families

Usage of CLCs by non-APS athletic clubs/teams





# Recommendations Extracurricular



Created master database of all extracurricular and off-campus trips

Based on health guidance, establish safety criteria to determine which extracurricular activities and trips can continue

Prior to  
Aug. 14

Apply criteria to establish which activity/trip can be in-person, remote, or not able to continue

Prior to  
Aug. 14

Determine procedures for universal events

Revisit supplemental language as necessary  
Revise district forms/handbooks





# Recommendations

## Family Engagement



Deploy a district-wide communication plan that keeps families informed throughout the summer and school year

Provide virtual family trainings on remote learning tools

Use a central point of contact for family engagement in all schools

Continue to expand Family Resource Centers

Provide linkages to community resources, including child care, out-of-school time, and extended learning opportunities for families





# Recommendations

## Mental Health and Transitions

Provide a district resource about COVID-19

Expand strategies to support mental health needs of students, staff and families

Ensure wraparound supports for students identified with high-risk factors

Deploy strategies for transitions into kindergarten, 6th grade, (7th grade for East cluster) and 9th grade



# Recommendations

## Logistics and Technology



Akron Public  
Schools.

Transportation: changes in routing; cleaning and health checks

Safety provisions for children walking to school, PPE for supporting student entry/exit

Shift meal service to grab-and-go and/or in-classroom, provide meals to 100% remote students

Classroom space utilization to meet social distancing, provide classroom set-up for new rooms

Technology: computer repair procedures for 100% remote, blended or site-based; expand access for EL



# Recommendations

## Next Steps



July 1 ?

Governor and Ohio Department of Education release Restart Guidance

July 1

APS revises recommendations, if needed, based on Restart Guidance

July 13

Bring final reopen and recover plan to Board of Education for consideration

July 24

Families complete selection form to choose  
100% remote learning or blended learning option



Akron Public  
Schools.

Questions?