

Ohio Career-Technical & Adult Workforce Education

It's Not Your Father's VoTech
Anymore...
beyond the chalkboard



REFLECT:

From Vocational Education to CTE



NASDCTEc

Vocational Education in the 1900's

- Response to industrialization
- Trained workers with job-specific skills
- Helped drive nation's economic engine

Vocational Education in the 1900s

- ▣ Response to industrialization
- ▣ Trained workers with job-specific skills
- ▣ Helped drive nation's economic engine



Ohio Continued to Change in the 1960s

- ▣ Legislation responded to a need for trained workers
- ▣ Created joint vocational school districts to expand job opportunities
- ▣ Did together what each could not do alone



TRANSFORM:

A Reinvention



NASDCTEc

TRANSFORM:

A Reinvention



NASDCTEc

Careers today need postsecondary credential

- ▣ Rigorous academics
- ▣ High technical standards
- ▣ Problem solving
- ▣ Communication
- ▣ Teamwork



LEAD:

A Call to Action



NASDCTEc

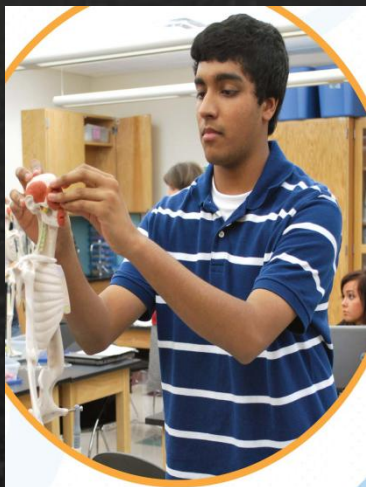
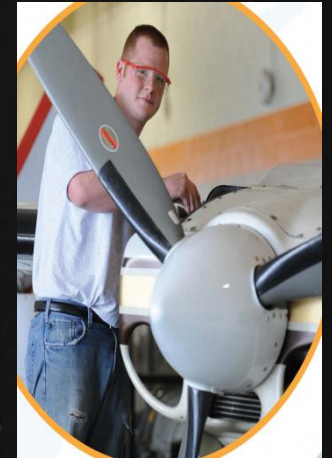
Critical to the US regaining leadership role in global competitiveness

- ▣ Leader in building collaborative connections among education, economic development and workforce development
- ▣ Career pathways responsive to business demands
- ▣ Expectations based on international standards



Partners with employers to design and provide high-quality, dynamic programs

- ▣ Programs aligned with current and emerging labor market needs
- ▣ Curricula based on workplace standards
- ▣ Essential for ensuring workforce development meets needs for growth



Prepares students for success in both continuing education and careers

- ▣ **Global economy demands alignment of preparation for work and continuing education**
- ▣ **Future careers demand skill acquisition and innovation**
- ▣ **Assessment to validate competencies leading to national credentials essential**

Delivers comprehensive programs aligned to National Career Clusters

- ▣ Rigorous and comprehensive programs of study
- ▣ Qualified instructors
- ▣ Structured sequence of courses
- ▣ Leads to postsecondary credentials



Career Cluster Pathways

1. Agriculture, Food & Natural Resources
2. Architecture and Construction
3. Arts, A/V Technology & Communications
4. Business Management & Administration
5. Education and Training
6. Finance
7. Government and Public Administration
8. Health Science
9. Hospitality & Tourism
10. Human Services
11. Information Technology
12. Law, Public Safety, Corrections & Security
13. Manufacturing
14. Marketing, Sales & Service
15. Science, Technology, Engineering & Mathematics
16. Transportation, Distribution & Logistics

Results-driven system demonstrating a positive return on investment



- ▣ **Accountable**
- ▣ **Data-driven decisions**


CTE Delivery Occurs Through

- 663 City, Local, Exempted Village, Joint
- Vocational School Districts (JVSDs)

91 Career-Technical Planning Districts (CTPDs)

- 49 JVSDs
- 42 Comprehensive/Compact School Districts



 **CUYAHOGA VALLEY
CAREER CENTER**
MAIN ENTRANCE
High School
Adult Education
Cosmetology
Horticulture/Greenhouse
Valley Inn Restaurant

Cuyahoga County has
9 CTPD's

Lorain County has
2 CTPD's
Lorain County JVS
Lorain City

Ohio has 88 counties,
91 CTPD's





Ohio's Professional Association for
Career & Technical Education
Serves 2400 members serving High
School and Adult Programs statewide

Instructors

Administrators

Post-Secondary Educators

Business and Industry Members

School Board Members

& anyone who supports career-technical and
adult education in Ohio

**ADULT STUDENTS
SERVED:**

89,809

**HIGH SCHOOL
STUDENTS SERVED:**

127,085

<http://www.ohioacte.org/>

Career Technical Education Governance Structure:

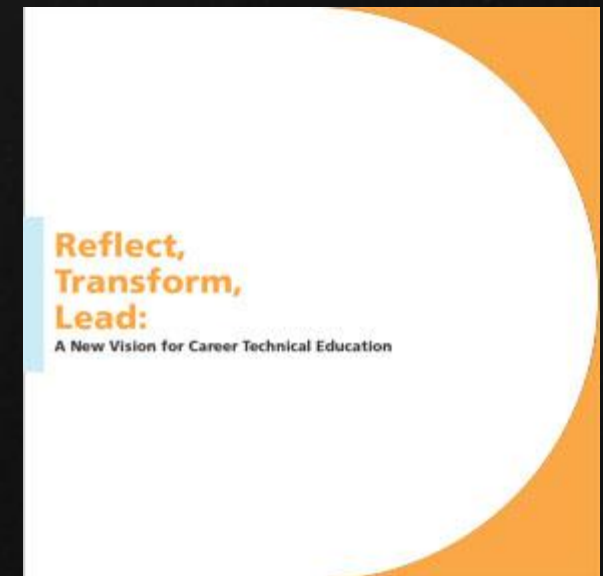
State Board of Education

Ohio Department of Education

Board of Regents

Mission: The Ohio Career-Technical and Adult Education mission is to provide quality programs and services to meet the lifelong career education needs of Ohio's youth and adults. The system creates, maintains and empowers the workforce of today and tomorrow and is critical to the economic future of Ohio.

**Reflect, Transform, Lead:
A New Vision for Career
Technical Education**



http://www.careertech.org/state_profile/show/Ohio

• **FY2009 Secondary Workforce Development**

Career Field Enrollment Grades 9-12

Business and Administrative Services	25,391
Agricultural and Environmental Systems	24,556
Information Technology	11,537
Manufacturing Technologies	10,865
Construction Technologies	9,832
Health Science	9,652
Transportation Systems	7,432
Marketing	7,139
Human Services	7,028
Arts and Communications	5,534
Engineering and Science Technologies	5,368
Hospitality and Tourism.	3,887
Education and Training	3,821
Law and Public Safety	2,254
Finance	1,224

- Government and Public Administration+FY2008 was the first year that Government and Public Administration career field technical content standards were available to districts for program start-up

Ohio's Career-Technical and Adult Workforce Education

- Adult Workforce Education in Ohio
 - Serves adult students and local business and industry through 57 Adult Workforce Centers and is part of the publicly funded Career-Technical and Adult Education system serving both high school and adult student

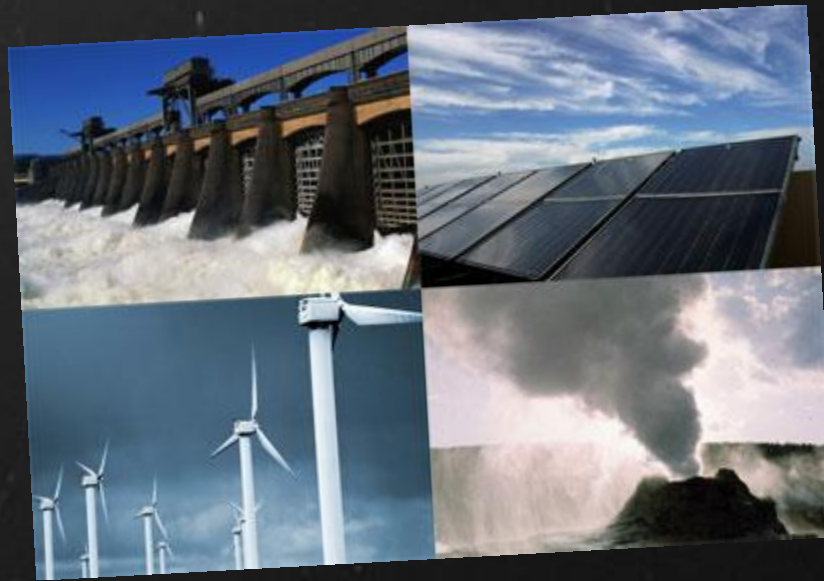
...beyond the chalkboard

- Low-barrier system that starts with career education at the elementary and middle schools and teaches advanced skills through the state's community college system and the University System of Ohio.
- University System of Ohio integrates postsecondary workforce education and offers many educational options.
- Students completing High School and Adult Workforce programs earn college aligned credit that can be used in obtaining Associate and Bachelor degrees if desired.

- According to the Ohio Jobs Outlook, education and health services jobs are expected to increase by 19.2% by 2014
- Northeastern Ohio is pushing for economic redevelopment as a technology and medicine corridor

CTE Programs

Industry Specific and Economically Advantageous to the Region



School Board Leadership

Effective Career-Technical Education Board Members

- ▣ Focus on connecting student outcomes with economic development
- ▣ Employ a regional perspective
- ▣ Become an advocate
- ▣ Assume the role of liaison between your home school district and the community
- ▣ Be a partnership builder



Through the Years as CTE Board Member, how has the transformation to the New CTE Changed Your Board Work?

NOT A NEW LABEL FOR THE SAME SYSTEM



A REINVENTION



Presented for OSBA

Dwight Anstaett Dwight.Anstaett@ode.state.oh.us

Kim Davis kdavis@ohp.k12.oh.us

Celena Roebuck croebuck@cvccworks.com

Board Member: Steve Kenzig stephen.kenzig@tri-c.edu

April 29, 2011

Board Leadership Institute