



Delaware City Schools Healthy Restart Plan



July 15, 2020



Guiding Principles

1. Health and Safety for ALL

- a. Ohio Department of Health and Delaware General Health District will provide guidance to ensure student, staff and community health needs are considered.

2. Equity and Access

- a. All students will be taught by DCS Teachers
- b. Devices and internet connectivity available to every student

3. Mindful of Budget and Finances

- a. Partnership between the District and Staff
- b. Financial resources are considered in this plan

4. Commitment to Flexibility

- a. We will continually monitor public health conditions and adjust our learning models.



Engaging in the Work

1. Guidance from state and local health organizations
2. Insights from family and staff survey data
3. 100+ people have participated in work groups over the past 4 weeks to review every aspect of our school operations including academics, transportation, food service, school clinics, cleaning protocols and more.

3 Scenarios Planned for 2020-2021

It is possible the district will need to engage in more than one of these options throughout the school year based on public health conditions and school/district COVID cases.

1 | Blended Learning

Students would have a blended schedule that includes in-person learning and at-home learning. Buildings would be limited to 50% of our students to allow for physical distancing.

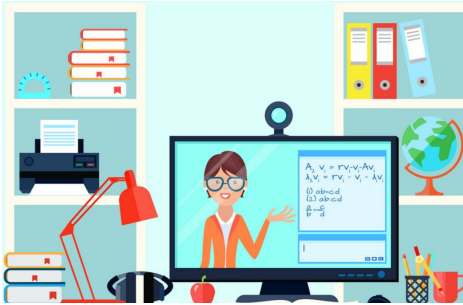
2 | At-Home Learning

If public health conditions necessitate classroom, building or district closure, students would continue at-home learning with more rigorous instruction and higher expectations for engagement.

3 | All In/Every Day

All students would attend school 5 days a week with enhanced safety protocols. With current enrollment, only limited physical distancing would be possible.

DCS Online Academy



Online Academy

The Delaware City Schools Online Academy provides a full-time at-home learning experience for any student who does not feel comfortable returning to the school environment during the pandemic. For the 2020-2021 school year, the DCS Online Academy will be available to any student in grade K-12. Families can elect the Online Academy for one semester at a time.

- All staff will wear face coverings.
- Students in Grades K-5 will wear face coverings on buses and inside buildings with appropriate mask breaks throughout the day. Masks for Preschool are recommended.
- Students in Grades 6-12 will wear face coverings on buses and inside buildings.
- School nurses will manage mask exemption requests with guidance from Delaware General Health District.

Face Covering Expectations



Face covering can be a mask, bandana, face shield, gaiter or other cloth covering that covers the mouth and nose.

- Student Start Date will be Monday, August 31.
- Days may be utilized prior to August 31 for orientations/parent meetings.
- Teacher Inservice Day scheduled for Sept. 28 is now a student learning day.

Staff start dates are not changed. The days will be used to fully prepare classrooms, engage in orientations and parent meetings, understand safety expectations and prepare for both in-person and online learning scenarios.

School Calendar Revisions



Blended Learning Plan: 50% of students in school on a rotating schedule (K-12)

	Week 1	Week 2
Group A	3 Days In-Person 2 Days At-Home	2 Days In-Person 3 Days At-Home
Group B	2 Days In-Person 3 Days At-Home	3 Days In-Person 2 Days At-Home

Blended Learning Plan: 50% of students in school on a rotating schedule (K-12)

Parents assess student health before school

Face coverings required for staff and students

Furniture arranged to provide distancing

Additional cleaning of surfaces

Frequent hand washing and sanitizing

Lunchroom space is expanded to other areas

No visitors or volunteers

Limited shared supplies - sanitizing between users

No lockers

Grab and go breakfast

Reduced capacity on buses

No field trips

No large group student events

Considerations for students with disabilities and at-risk learners to have more in-person time

At-Home Learning: Students engage in at-home learning

At-home learning may apply to a single class, building or the entire district

Students will receive rigorous online instruction and assignments from DCS teachers while the student learns at home.

Student attendance/participation is required and will be monitored.

Students will be expected to follow daily schedules outlined by their teachers.

Traditional grading will be in effect (**not** Pass/Fail).

Grab and go breakfast/ lunch available at select locations.

No extracurricular activities if building/district is closed.

Services for students with disabilities will continue to be provided.

This learning model will only be utilized if public health necessitates the closing of a classroom, building or the district.

All In/Every Day: All students attend school on a regular schedule

Parents assess student health before school

Face coverings required for staff and students

Additional cleaning of surfaces

Frequent hand washing and sanitizing

Lunchroom space is expanded to other areas

No visitors or volunteers

Limited shared supplies - sanitizing between users

No lockers

Grab and go breakfast

No field trips

No large group student events

Recommended distancing in classrooms and on buses is not possible in this scenario.



Delaware's Healthy Restart Plan

Based on current information, DCS plans to begin the school year with the Blended Learning Model. Families would choose one of the following:

1. **Blended learning: 3 day/2 day learning model with in-person and at-home learning on a rotating schedule.** As we continue to evaluate COVID conditions, students could return 5 days/week. It is also possible students would engage in remote learning if it is necessary to close a classroom, building or the entire district.
2. **Full-time at-home learning** through the Delaware City Schools Online Academy.

Delaware City Schools Preschool Plan



- Students will attend Monday through Thursday following a half-day schedule. (AM and PM sessions)
- Additional options will be provided for students with disabilities whose families choose not to have their child attend in-person.
- Due to current ODJFS regulations, class sizes have been limited. Students with disabilities will be served in addition to a limited number of peer models.
- If ratios are increased by ODJFS, additional peer models may be added to classrooms at a later date.

******The Supervisor of Preschool and Preschool Special Education will communicate with families regarding the criteria used to determine peer model selection and enrollment for 2020-21.

DCS Online Academy: Students learn from home every day



"Parents will partner with teachers for a successful learning experience"

DCS Online Academy: Students learn from home every day

Available to Students in Grades K-12: Younger students will need a parent or adult for daily support.

Students will receive virtual instruction and assignments from DCS teachers while the student learns at home.

Families can elect to enroll in the DCS online academy for one semester at a time. Enroll by July 24 for first semester.

Parents will partner with DCS teachers to support the learning while students are at home. Once in the online academy, the student must remain in at-home learning for the entire semester.

Student attendance/participation is required and will be monitored.

Students will be expected to follow daily schedules outlined by their teachers.

Grading and learning expectations will match those of the students in the blended learning model. Traditional grading will be in effect (**not** Pass/Fail as we had in the spring).

Students will need access to a Chromebook or computer and high speed internet. A phone or tablet will not suffice. The district may be able to support your family with devices and technology if needed.



Please share your questions to WeAreListening@delawarecityschools.net. We will compile questions and answers into a FAQ document and share with our school community.
