



Strategies for a Safe and Responsible Return

2020-2021 School Year

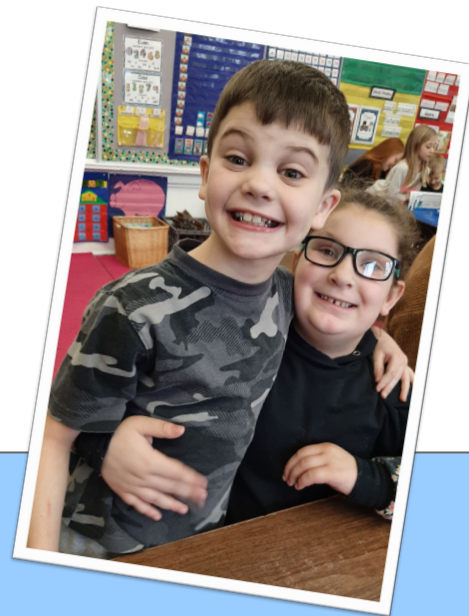


JEROMESVILLE, OHIO

Recommendations

Superintendent's recommendations are tentative and can/will be modified with additional input from:

- Changing health and safety guidelines
- Updated guidance from state and county officials
- Agreements with the District's labor union partners
- Availability of resources and feasibility of safe reopening



Superintendent's Message

In looking toward the 2020-21 school year, it is still our goal for 100% of our students to return to our buildings every day, as long as it can be done safely. To that end, we have been developing a responsible, 4-tiered plan (Plans A, B, C & D) for returning to school, which prioritizes the health and safety of both staff and students. Think of these 4 tiers as being on a sliding scale. We could move from one to another throughout the year, depending on the circumstances surrounding COVID-19 as it relates to Hillsdale Schools and Ashland County.

We understand that our staff, students and their families have various needs and concerns. We have listened carefully to the feedback we received through the surveys, emails and phone calls. We appreciate your input and your understanding that any plan cannot address everyone's concerns and wishes.

The plan is based on public health information available at this time. As new guidance from local, state and federal officials is received, the plan will most likely be adjusted to best support the health and safety of our students and employees. All updates will be posted online at <http://www.hillsdale.k12.oh.us/district/covid-19> and shared with our families and employees.

This document outlines the initial recommendations and guidelines that will be used to keep students and staff members as safe as possible. The presentation was provided to the Board of Education to preview at its July meeting and for review at the August board meeting. Please understand additional guidelines and plans (i.e., busing, drop off, attendance procedures, etc) will continue to be developed and shared as available.

Together we will get through these difficult times.

Stay Falcon Strong,

Steve Dickerson, Superintendent

Our Vision

Build character & expect excellence by providing a safe & challenging environment that prepares students to be successful in life

Our Mission

Building Character | Expecting Excellence

Providing diverse opportunities in:

- ◆ academics
- ◆ College Credit Plus
- ◆ fine arts
- ◆ career & technical education
- ◆ extra-curricular activities
- ◆ leadership
- ◆ service

Inspiring & empowering students to:

- ◆ value learning as an ongoing process
- ◆ gain knowledge & skills they need

for continued education & employment in a changing global society



Guiding Principles

Education and Learning

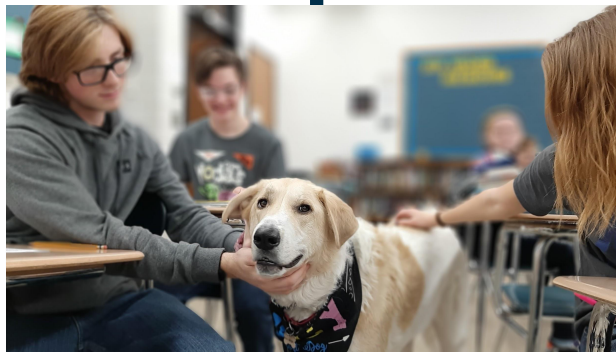
In-person instruction will be provided for as many students as possible. High-risk students and families will have priority placement.

An online fully virtual learning option will be available for K-12 students to choose.

Preparations for full remote learning will be in place if there is a need due to COVID-19.

Health and Safety

We will continue to work closely with and follow guidelines from ODH, ODE, OHSA, and the Ashland County Health Dept.



Social and Emotional

We will work diligently to support social learning and interaction for all students as safely as possible.

Overall Operations

We will work to ensure smooth operations with:

- Financial resources
- Transportation
- Child Nutrition
- Student Activities
- Family Needs
- Communications
- Facilities and Grounds
- Technology

We are Prepared

Plan A

All students physically in class every day.

Plan B

Students have two days of in-person instruction per week with 3 days of remote instruction.

Plan C

Students receive remote instruction from teachers. Buildings are open for students who need a learning space.

Plan D

Students receive remote instruction from teachers. Buildings are closed & all school business is completed remotely.

Plan A: All students will report to school every day for in-person instruction. This option is possible if it is safe enough to reduce social distancing guidelines.

Administrator and Staff Expectations

Administrators

- Conduct personal wellness checks prior to reporting to school.
- Ensure student wellness checks are conducted upon entering the building.
- Establish health protocols for students exhibiting symptoms of sickness.
- Are required to wear a facial covering when social distancing is not able to be maintained.
- Ensure guidelines are communicated and proper signage is visible for hallway, restroom, and lunch room protocols to be followed.
- Ensure disinfectant protocols are being followed.
- Ensure that sanitation supplies are readily available for the custodial and teaching staffs.
- Conduct personal wellness checks prior to reporting to school.

Teachers/Staff

- Ensure classroom setup provides the best possible social distancing for students.
- Are required to wear a facial covering when social distancing is not able to be maintained.
- Utilize fans to enhance airflow throughout classrooms.
- Eliminate shared classroom materials unless sanitation is possible.
- Supervise hallways and common areas to ensure students are following new protocols
- Assist in the teaching and implementation of new hallway, restroom, and lunchroom procedures.

Plan A: All students will report to school every day for in-person instruction. This option is possible if it is safe enough to reduce social distancing guidelines.

Parent and Student Expectations

Parents	<ul style="list-style-type: none">• Conduct student wellness checks prior to sending student to school. Students with a fever cannot report to school• Provide a facial covering and encourage third through twelfth grade students to wear them.• Provide students with daily water bottles as drinking fountains will not be available.• Talk to your child about safety protocols, including proper handwashing and hygiene/sanitation habits.• Limit visits to school. (dropping off forgotten items etc.)
Students	<ul style="list-style-type: none">• Report immediately to assigned classroom upon arrival to school.• Students in grades three -twelve will be required to wear facial coverings. Every effort will be made to provide time for students to be mask-free while maintaining social distancing throughout the day.• Students younger than grade three are also encouraged to wear a facial covering.• Maintain maximum social distancing from peers whenever possible.• Obtain a sanitizing wipe and wipe down desk area upon entering classroom and prior to leaving.• Follow all hallway signage and direction given on how to move through the building.• Wash or sanitize hands regularly• Utilize designated entrance and exit doors

Plan A: All students will report to school every day for in-person instruction. This option is possible if it is safe enough to reduce social distancing guidelines.

Custodial Expectations

Custodians

- Ensure teachers have the daily sanitation supplies needed.
- Regularly disinfect classrooms according to the provided schedule.
- Regularly disinfect restrooms according to the provided schedule.
- Regularly disinfect common areas, hallways, and lunch areas. This includes, but is not limited to, door handles, handrails, stalls, sinks, etc.
- Ensure designated doors are propped open at arrival and dismissal.
- Ensure doors are closed and secured following arrival and dismissal.
- Wear a facial covering when within six feet of staff, students, or family members.



Plan A: All students will report to school every day for in-person instruction. This option is possible if it is safe enough to reduce social distancing guidelines.

Transportation Expectations

Administrators

- Work in tandem with building administration to develop a transportation schedule.
- Develop routes and protocols to be followed.

Bus drivers

- Follow routes and protocols developed by administration.
- Ensure that students sit one per seat except for family members who must sit two per seat together.
- Ensure that students stay in assigned seats at all times.
- Ensure that students arrive to their destinations safely.
- Wear a facial covering at all times.

Students

- Use provided hand sanitizer upon entering bus.
- Maintain social distancing while at bus stop.
- Will be required to sit with siblings.
- Masks will be required.
- Follow driver rules and procedures for entering and exiting.



Plan B: Students will attend school for in-person instruction for 2 days and complete at-home assignments 3 days. There will be two groups of students following an alternating schedule.

Administrator and Staff Expectations

Administrators

- Communicate student schedules to families
- Conduct personal wellness checks prior to reporting to school.
- Ensure student wellness checks are conducted upon entering the building.
- Establish health protocols for student exhibiting symptoms of sickness.
- Are required to wear a facial covering when social distancing is not able to be maintained.
- Ensure guidelines are communicated and proper signage is visible for hallway, restroom, and lunch room protocols to be followed.
- Ensure classrooms are disinfected between classes and after school.
- Ensure that sanitation supplies are readily available for the custodial and teaching staffs.

Teachers/Staff

- Conduct personal wellness checks prior to reporting to school.
- Provide in-person instruction that is supported with weekly home expectations.
- Ensure classroom setup provides the best possible social distancing for students.
- Are required to wear a facial covering when social distancing is not able to be maintained.
- Utilize fans to enhance airflow throughout classrooms.
- Eliminate shared classroom materials
- Supervise hallways and common areas to ensure students are following new protocols
- Assist in the teaching and implementation of new hallway, restroom, and lunchroom procedures.

Plan B: Students will attend school for in-person instruction for 2 days and complete at-home assignments 3 days. There will be two groups of students following an alternating schedule.

Parent and Student Expectations

Parents

- Follow the provided student schedule.
- Conduct student wellness checks prior to sending student to school. Students with a fever cannot report to school
- Provide a facial covering for third through twelfth grade students (highly recommended)
- Provide students with daily water bottles as drinking fountains will not be available
- Talk to your child about safety protocols, including proper handwashing and hygiene/sanitation habits.
- Limit visits to school. (dropping of forgotten items etc.)

Students

- Report immediately to assigned classroom upon arrival to school.
- Students in grades three -twelve will be required to wear facial coverings. Every effort will be made to provide time for students to be mask-free while maintaining social distancing throughout the day.
- Students younger than grade three are also encouraged to wear a facial covering.
- Maintain maximum social distancing from peers whenever possible.
- Obtain a sanitizing wipe and wipe down desk area upon entering classroom and prior to leaving.
- Follow all hallway signage and direction given on how to move through the building.
- Wash or sanitize hands regularly
- Utilize designated entrance and exit doors

Plan B: Students will attend school for in-person instruction for 2 days and complete at-home assignments 3 days. There will be two groups of students following an alternating schedule.

Custodial Expectations

Custodians

- Ensure teachers have the daily sanitation supplies needed.
- Regularly disinfect classrooms according to the provided schedule.
- Regularly disinfect restrooms according to the provided schedule.
- Regularly disinfect common areas, hallways, and lunch areas. This includes, but is not limited to door handles, handrails, stalls, sinks, etc.
- Ensure designated doors are propped open at arrival and dismissal.
- Ensure doors are closed and secured following arrival and dismissal.
- Wear a facial covering when within six feet of staff, students, or family members.



Plan B: Students will attend school for in-person instruction for 2 days and complete at-home assignments 3 days. There will be two groups of students following an alternating schedule.

Transportation Expectations

Administrator

- Work in tandem with building administration to develop a transportation schedule.
- Develop routes and protocols to be followed.

Bus drivers

- Follow routes and protocols developed by administration.
- Ensure that students sit one per seat except for family members who must sit two per seat together.
- Ensure that students stay in assigned seats at all times.
- Ensure that students arrive to their destinations safely.
- Wear a facial covering at all times.

Students

- Use provided hand sanitizer upon entering bus.
- Maintain social distancing while at bus stop.
- Will be required to sit with siblings.
- Masks will be required.
- Follow driver rules and procedures for entering and exiting.



Plan C: Fully remote instruction will be provided for students by Hillsdale Local Schools' teachers. All HLS school buildings will be open for students who need a place to learn.

Administrator Expectations

Administrators

- Establish a protocol for organizing students working in the building.
- Ensure students are socially distanced, provided, breaks, lunch, and active time outdoors.
- Conduct personal wellness checks prior to reporting to school.
- Ensure student wellness checks are conducted upon entering the building.
- Establish health protocols for student exhibiting symptoms of sickness.
- Are required to wear a facial covering when social distancing is not able to be maintained.
- Ensure guidelines are communicated and proper signage is visible for hallway, restroom, and lunch room protocols to be followed.
- Ensure classrooms are disinfected between classes and after school.
- Ensure that sanitation supplies are readily available for the custodial and teaching staffs.



Plan C: Fully remote instruction will be provided for all students by Hillsdale Local Schools' teachers. All HLS school buildings will be open for students who need a place to learn.

Staff Expectations

Teachers

- Conduct personal wellness checks prior to reporting to school.
- Report to work daily
- Teachers will provide remote learning instruction.
- Teachers will be available to provide in-person support when needed during school hours.
- Help with student monitoring when schedule permits.
- Ensure classroom setup provides the best possible social distancing for students.
- Are required to wear a facial covering when social distancing is not able to be maintained.
- Utilize fans to enhance airflow throughout classrooms.
- Eliminate shared classroom materials.

Educational Aides

- Conduct personal wellness checks prior to reporting to school to school daily.
- Are required to wear a facial covering when social distancing is not able to be maintained.
- Monitor students and follow the break schedule provided by the administration.
- Support teachers when and if needed.
- Ensure students are following sanitation protocols.

Plan C: Fully remote instruction will be provided for all students by Hillsdale Local Schools' teachers. All HLS school buildings will be open for students who need a place to learn.

Parent and Student Expectations

Parents

- Communicate the needs of your student. (able to learn from home, needs a learning location).
- Conduct student wellness checks prior to sending student to school. Students with a fever cannot report to school.
- Provide a facial covering for third through twelfth grade students.
- Provide students with daily water bottles as drinking fountains will not be available.
- Talk to your child about safety protocols, including proper handwashing and hygiene/sanitation habits.
- Limit visits to school. (dropping of forgotten items etc.).

Students

- Report immediately to assigned area upon arrival to school.
- Students in grades three -twelve will be required to wear facial coverings. Every effort will be made to provide time for students to be mask-free while maintaining social distancing throughout the day.
- Students younger than grade three are also encouraged to wear a facial covering.
- Maintain maximum social distancing at all times.
- Obtain a sanitizing wipe and wipe down desk area upon entering work area and prior to leaving.
- Follow all hallway signage and direction given on how to move through the building.
- Wash or sanitize hands regularly
- Utilize designated entrance and exit doors

Plan C: Fully remote instruction will be provided for all students by Hillsdale Local Schools' teachers. All HLS school buildings will be open for students who need a place to learn.

Transportation Expectations

Administrator

- Work in tandem with building administration to develop a transportation schedule.
- Develop routes and protocols to be followed.

Bus drivers

- Follow routes and protocols developed by administration.
- Ensure that students sit one per seat except for family members who must sit two per seat together.
- Ensure that students stay in assigned seats at all times.
- Ensure that students arrive to their destinations safely.
- Wear a facial covering at all times.

Students

- Use provided hand sanitizer upon entering bus.
- Maintain social distancing while at bus stop.
- Will be required to sit with siblings.
- Masks will be required.
- Follow driver rules and procedures for entering and exiting.



Plan C: Fully remote instruction will be provided for all students by Hillsdale Local Schools' teachers. All HLS school buildings will be open for students who need a place to learn.

Custodial Expectations

Custodians

- Ensure teachers have the daily sanitation supplies needed.
- Ensure student monitors have the daily sanitation supplies needed.
- Wear a facial covering when within six feet of staff, students, or family members.
- Regularly disinfect classrooms according to the provided schedule.
- Regularly disinfect restrooms according to the provided schedule.
- Regularly disinfect common areas, hallways, and lunch areas. This includes, but is not limited to door handles, handrails, stalls, sinks, etc.
- Ensure designated doors are propped open at arrival and dismissal.
- Ensure doors are closed and secured following arrival and dismissal.



Plan D: Fully remote instruction will be provided for students by Hillsdale Local Schools' teachers. All HLS school buildings will be closed and instruction and learning must occur at home.

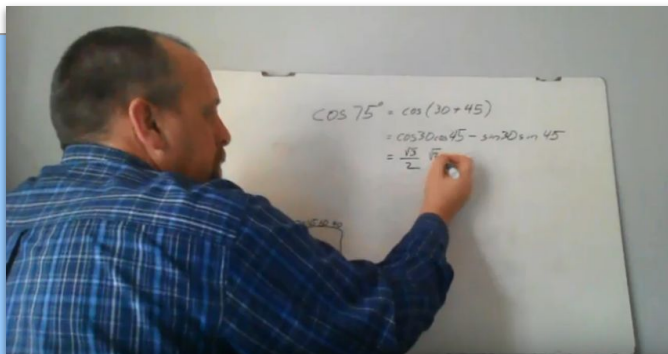
Administrator and Staff Expectations

Administrators

- Communicate regularly with staff, students and family members.
- Provide teachers with support for remote learning.
- Ensure that buildings are deep cleaned and ready for return to school.

Teachers/Staff

- Provide fully remote instruction.
- Follow district remote teaching expectations.
- Fully communicate with students and parents to ensure expectations are understood.



Plan D: Fully remote instruction will be provided for students by Hillsdale Local Schools' teachers. All HLS school buildings will be closed and instruction and learning must occur at home.

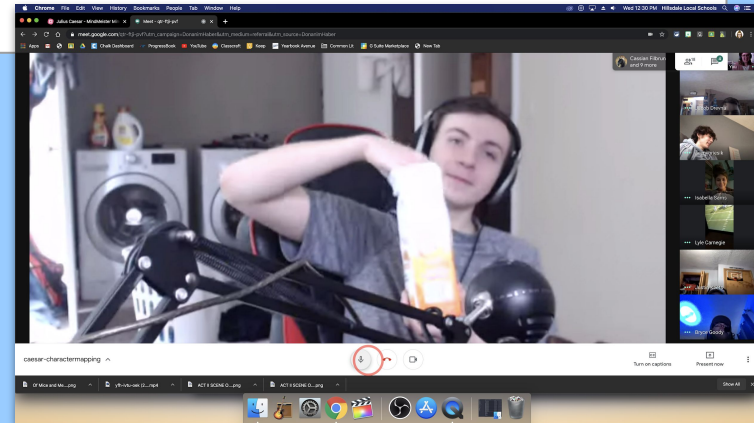
Parent and Student Expectations

Parents

- Monitor student progress.
- Stay in communication with teachers through Class Dojo (K-8) or Remind (9-12).

Students

- Report virtually based on classroom expectations.
- Communicate concerns and needs with classroom teachers.
- Complete all assignments and activities virtually.



Plan D: Fully remote instruction will be provided for students by Hillsdale Local Schools' teachers. All HLS school buildings will be closed and instruction and learning must occur at home.

Custodial Expectations

Custodians

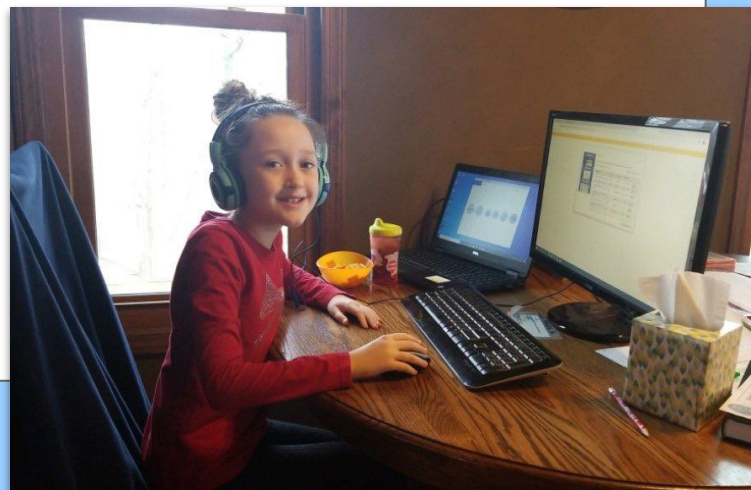
- May be asked to deep clean and sanitize all surfaces



Self-Taught Fully Remote Curriculum– Jefferson County ESC Online Curriculum

Some families might have concerns about their children returning to school. There is a fully online option for families to choose. Courses, units and assignments will be assigned and monitored by Hillsdale Local Schools' teachers. Teachers will be available to answer questions. See below if you are interested in this option for your child.

- Sign your child up by August 14th.
- You must have reliable internet.
- Arrange for your student to have a learning device (the school will provide, if needed).
- Application can be found @ <http://www.hillsdale.k12.oh.us/district/news/k-12-online-learning-curriculum>





**"Hillsdale Local Schools
is committed to educating
all students safely
during these uncertain times.**



**We are ready to respond
with alternatives
if circumstances dictate a change. "**



JEROMESVILLE, OHIO